



MODULE
TECH
W

 **MARU**
DESIGN

Shaping imaginations.

EESTI TRAVI

MAKING THE WORLD A BETTER PLACE

Maru Design offers comprehensive service:

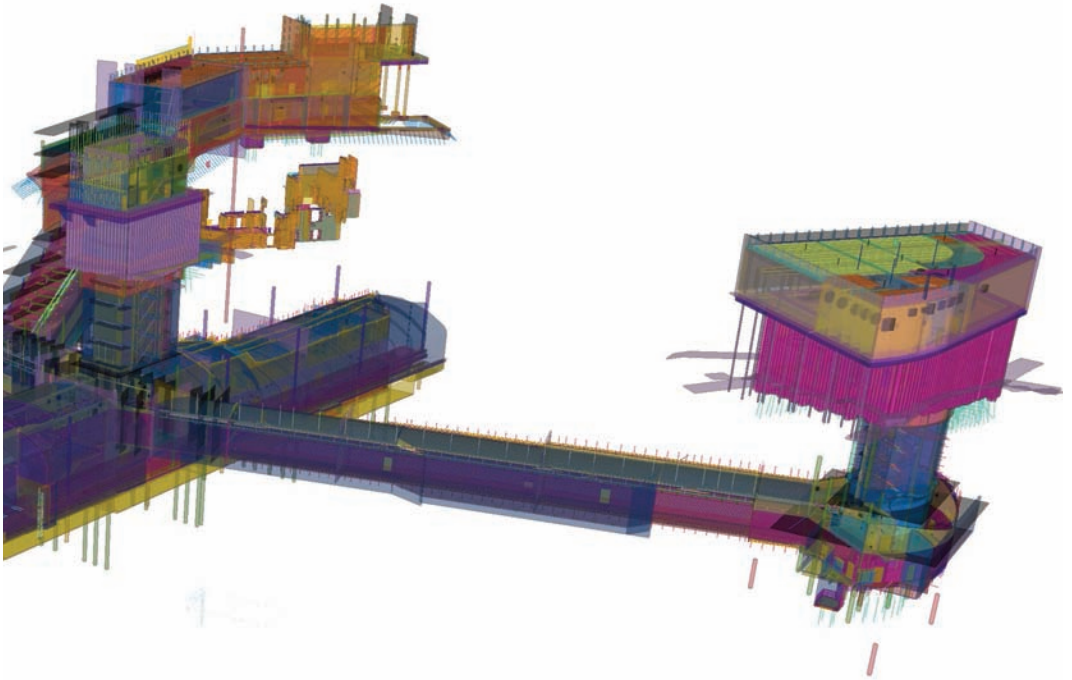
- we help the client to prepare the initial design task;
- we create the initial draft plan;
- prepare all other design stages: we draw up the preliminary design, detailed design and working documents and, if necessary, shop drawings;
- we apply for design criteria and building permits.

We operate in all design areas, such as:

- architecture;
- design of structures;
- MEP parts of the building (heating, ventilation, cooling, water supply, sewerage, high and low current, automation, gas and heat supply, fire-extinguishing systems).

In cooperation with partners we also design specific systems of the building, such as compressed air, gas or foam extinguishing and much more.



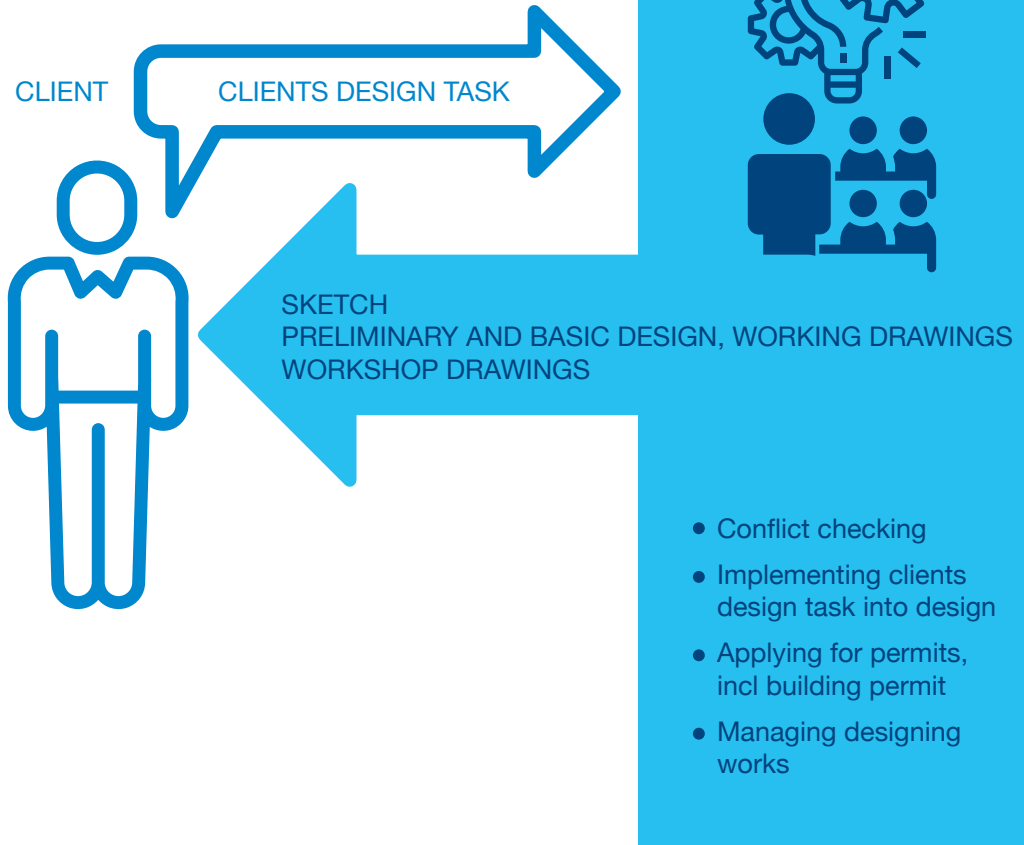


We have a long-term experience in the design of commercial real estate, be it:

- complex production buildings;
- large or small warehouse buildings;
- shopping centres;
- offices;
- stadiums;
- specific solutions such as port ramps, support frames for production equipment and foundations.



Design process based on client's expectations





Architectural design



Structural engineering



HVAC design



Water supply and sewerage design



Electrical design design



Site layout and road design



Other special parts, e.g. fire safety, compressed air, etc.



A good design starts from coordinated management

Design management or main design is our strength. Our experienced design managers take care that the final result:

- is consistent with the expectations and initial task of the client;
- complies with standards and legislation;
- is free of conflicts and clashes and is buildable.

Our principles

In design, our philosophy is that a building is needed for the activities in it. Therefore, we will find the best technical solution for the client:

- based on the client's (production) technology, spatial planning, placement of shelves, etc.;
- taking into account also the future needs, as the building must last both physically and morally for several decades for the activities in it.

Costs under control

Maru Design has a solid knowledge base of construction prices and technology thanks to long-term experience and support from the construction team. For clients who want to keep their investment under control, we will monitor the construction costs of the building on an ongoing basis during the design process.



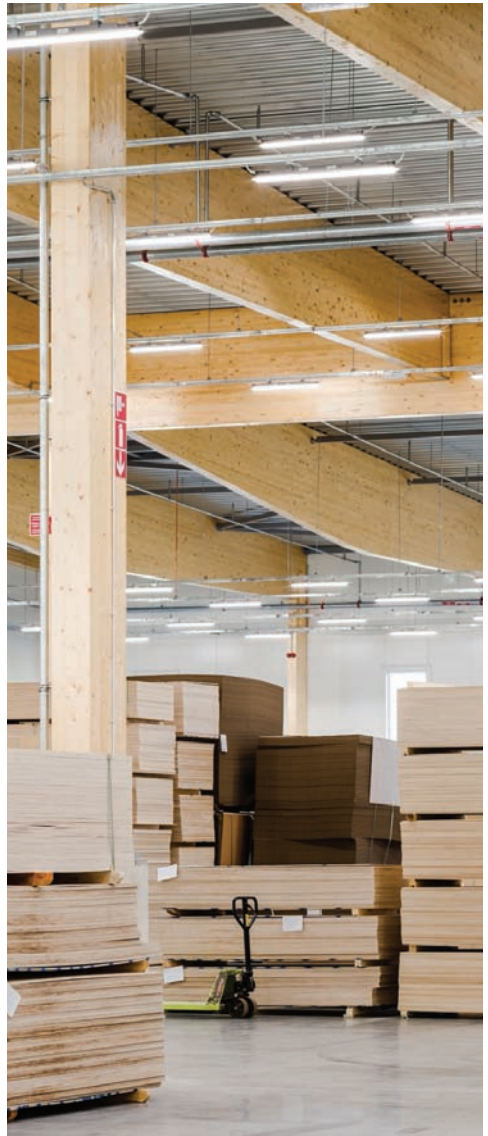
Design of structures

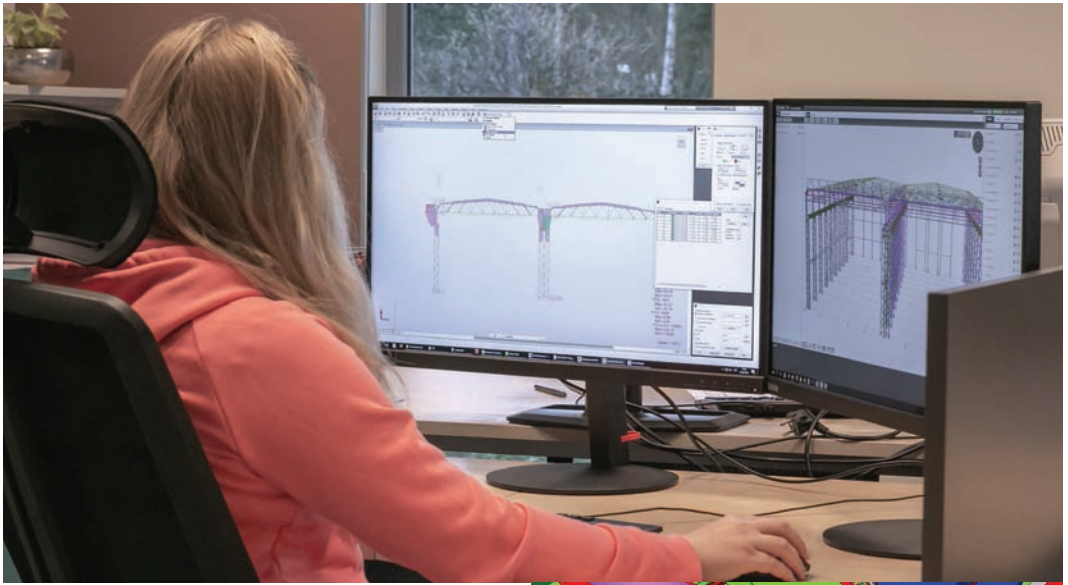
Maru Group has been designing structures since 1991.

The core of our team of constructors has over 20 years of experience in the field. They are supported by designers, modellers, technicians and trainees – we consider supporting new generation and the development of the construction engineering to be very important.

Our team of engineers designs steel, concrete, composite as well as wood structures.

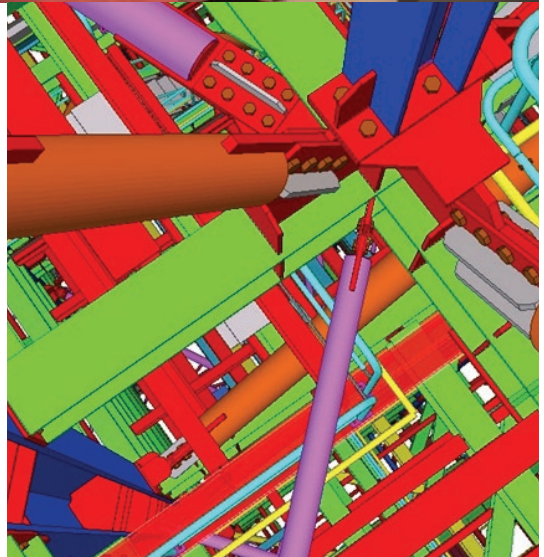
The designs are created in the Tekla Structures program as detailed three-dimensional models. We also offer dimensioning structures and perform assembly calculations using modern software (StaadPRO, Robot Structural Analysis, RAM Connection, IDEA Statica).





Building information modelling

Since 2015 (structural part since 2005), Maru Design prepares all designs using building information modelling (BIM). This means that we use model design in all design stages of the building.



pe3d.com) - Maru_AR+EK+Tehnosüsteemid puhastatud

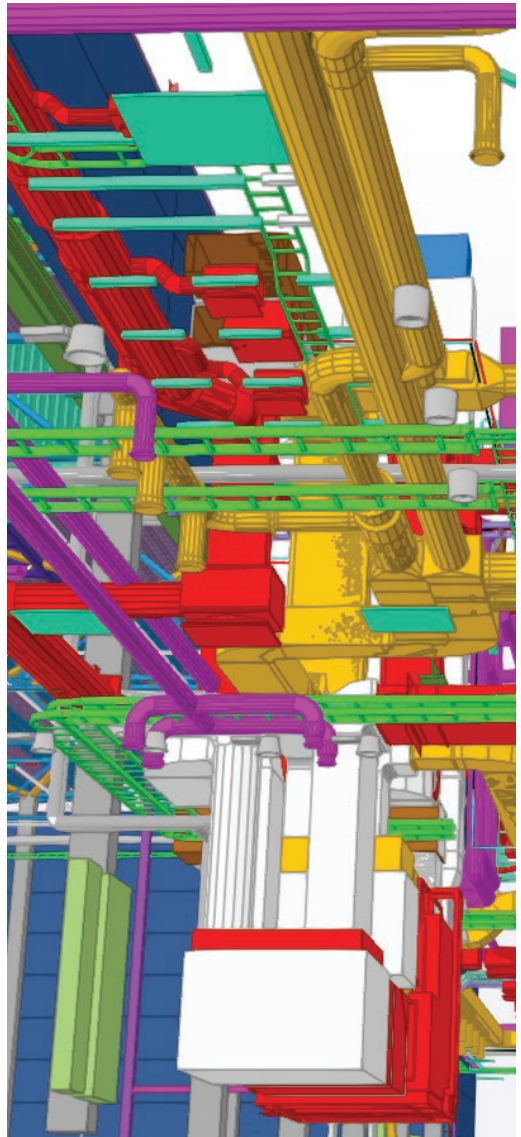


The building information model:

- helps to avoid rework on construction site;
- accelerates the design and construction process;
- provides the client with a design that facilitates the management of the completed building.

We create an accurate building information model, which includes even fasteners for example. The parts of the building in the model provide information on the properties, dimensions, location of the materials and much more.

We use following software to create the original model: ArchiCad, Revit, Tekla Structures, MagiCad, CadsPlanner, etc. We create composite models using the Trimble Connect program.





Järvevana tee 5, 10132 Tallinn, Estonia

Phone +372 657 5850

Email projekt@maru.ee

maru.ee/design

